

Flywheel Fundraising 2011

Michigan Women's Ultimate Frisbee www.flywheelultimate.com

Flywheel Fundraising Committee (FFC)

Hi again readers!

First of all, Flywheel would like to give a big thanks to everyone that came to support us at the Michigan Indoor Tournament. Beating Northwestern in the championship game was a great start to what we believe is going to be an extremely exciting spring semester. Next week, we head to sunny San Diego for UCSD's Pres Day Invite! We'll have plenty of details from these tournaments coming your way soon. The purpose of this edition of the Dump Pass Dispatch (DPD), however, is to talk about our fundraising efforts and goals for the 2011 season. We have always been a club proud of keeping its dues low and its players obsessed with ultimate instead of worrying about financial obligations. It has always been Flywheel's mission not to deter any girl from the chance to play for such an outstanding program. To keep this goal a reality, we need your help.

2011 FFC Members

Kelsey DeLave
Adrienne Lemberger
Kim Culpán
Lizzie Grobbel
Meeri Chang

This year, our budget is considerably higher than it has been in the past. We are getting buff at Crossfit training three times per week and are flying to one to two more tournaments than we are normally accustomed. The costs of travel, tournament bids and uniforms add up, but the opportunities Flywheel will have to improve by traveling to more competitive tournaments is going to be incredible. We are a team dedicated to reaching our fullest potential, and therefore we are willing to make extra fundraising efforts this season to help defray additional costs. To achieve this goal, we have created a Flywheel Fundraising Committee.

As family members, friends, members of the Ann Arbor ultimate community and Flywheel alums, any support you can provide for us this season will be greatly appreciated. The goal of this issue is to highlight events you can be a part of here in Ann Arbor, as well as to present other opportunities to donate! As a Fundraising Committee, we look forward to bringing together Flywheel communities of the past and present in order to make this year a success. Thank you again for your continuous support of Michigan Ultimate. Fly what?

-Kelsey "Faf" DeLave, *Fundraising Chair*

Inside this issue:

| | |
|------------------------------|-----|
| Adopt-a-Rookie | 2-4 |
| Pay-to-Win/Upcoming Events | 5 |
| Donating/Sponsoring Flywheel | 6 |
| Ordering Flywheel Gear | 7 |



UNIVERSITY OF MICHIGAN WOMEN'S ULTIMATE

www.flywheelultimate.com

The Adopt-A-Rookie Program

I'm sure you all remember your rookie season— your forehand (or in my case, lack there of), your first long car ride, your first layout, playing the cowbell,— it's all magic. While these experiences are entirely worth every penny, the cost of an ultimate season is substantial. With your support, this year's fresh crop of rookies can keep their first season focused on learning to love the game.

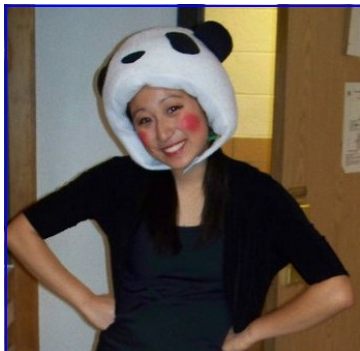
Below is a list and short description of our rookies. Take a look— they're pretty baller, I assure you. Through this program, you can choose to "adopt" a rookie for a single tournament, or choose to donate a certain amount per tournament that they play in. There is no flat rate for adoption and any donation you are willing to make will be greatly appreciated. To thank you for your support, you will receive a personal letter from your rookie with all the juicy details and stats from the tournament weekend! For donations of more than \$50, we'll even hook you up with Flywheel disc autographed by your little all-star.

To help make your decision, each of these fine rookies answered the following questions:

- 1) Where are you from?
- 2) What year are you/what school are you in?
- 3) What makes you "adoptable"?
- 4) What has been your favorite Flywheel memory thus far?

If you are interested in adopting, please send an e-mail to flyfunds2011@umich.edu. Enjoy!

Adopt-A-Rookie Roster



Meeri Chang

- 1) Johnson City, Tennessee
- 2) Freshman, LSA Honors
- 3) My name is Korean, so the "r" is pronounced sort of like a "d." I'm the only leftie and the shortest person on Flywheel. And, I can do the "Single Ladies" dance.
- 4) I definitely had reservations about playing a sport in which I had such little experience. However, Fall Brawl changed my mind completely. I loved being out on the field all day in a competitive team atmosphere. Even off the field, I could just FEEL the Flylove in the air, and it was really special to me. I realized that Flywheel was such a focused, supportive, and passionate community...I wanted in.



Theresa "TZ" Zettner

- 1) Grosse Pointe, Michigan
- 2) Freshman, LSA
- 3) I'm vegetarian, I enjoy reading Harry Potter, aaaaaand although it's only my first year, I love ultimate and know I'll be playing with Flywheel for as long as I can. Flywhat?!
- 4) When Bemu orchestrated a performance of songs from the Sound of Music in downtown Athens, GA.



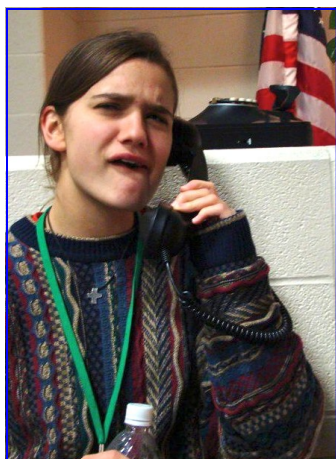
Jacqueline "JJ" "Jitters" Jarik

- 1) *Downtown* Chicago, Illinois
- 2) Freshman, LSA Honors
- 3) My freshman year of high school, I watched an episode of "Buffy the Vampire Slayer," in which Buffy flips from her back to her feet without using her hands. I have since mastered it and often do it when I get tired of standing up like a normal person.
- 4) Coming back from being down against UNC to win the semi-finals game at CCC. Everyone was so involved, especially the sidelines, and there was so much energy and enthusiasm, and somewhere mixed in with the flips my stomach was doing (because I was so nervous) and the rush of adrenaline I had from cheering on my teammates, I knew that it was where I wanted to be and where I belonged. Also, my favorite non-playing Flywheel memory was wandering the CVS in Georgia with Kim, Jessie and Carolyn, seriously entertaining the idea of buying a color-me playhouse because we had nothing else to do.



Jessie Smith

- 1) Ovid, Michigan (a small town near Lansing where the number of cows out-numbers the number of actual residents- heck yes:))
- 2) Freshman, School of Nursing
- 3) Ummm, I like to do things like wood working, biking, cliff jumping, hunting, camping, etc.
- 4) Making the team and being able to spend time with all these amazing ladies :)



Carolyn Vlach

- 1) Traverse City, Michigan
- 2) Freshman, LSA
- 3) I have an fantastic collection of Bill Cosby styled sweaters... and I'm a rookie handler.
- 4) The debrief after the finals at CCC: Obviously we were all feeling pretty disappointed, but the way FlyCC discussed the loss and then moved the dialogue on to highlights of the whole weekend- all the sick d's and snatches- showed the awesome perspective and spirit that makes Flywheel what it is.



Lizzie Grobbel (*note: *not* a freshman.)

- 1) Bloomfield Hills, Michigan
- 2) Sophomore, College of Engineering
- 3) Well, I can lick my elbow. Also, I'm in the Engineering Global Leadership Honors Program studying Civil and Environmental Engineering, so if you adopt me I can come build you a bridge /wind turbine/house or clean up your drinking water supply!
- 4) CCC Tournament - Driving over 13 hours to Georgia because the GPS took us through the backwoods of Tennessee, getting 3 hours of sleep, playing an all-rookie point (work in progress), watching Youtube videos, and ultimately getting second at the tournament!

“Rookies”... well, to Flywheel.



Lauren "Finn" Sweeney

- 1) Northern California
- 2) 1st year Grad Student, School of Public Health
- 3) I would love to be adopted so that I can fly back to some place warm to play my favorite sport!
- 4) I took a gap year to travel and played ultimate in many countries worldwide. Also... I'm a good juggler. When Bemu yelled at me but then apologized right away. No just kidding... running the timed mile at tryouts! Just kidding again. Seriously I loved the LONG drive to CCC and meeting all my shiny new teammates <3 flylove



Katie "Pimp" Poulos

- 1) St. Paul, Minnesota
- 2) 1st year law student
- 3) As a former gymnast, you never know when I might do a celebratory backflip after a great point!
- 4) During the finals at the Fall Brawl tournament when we were down to Pitt at half, but then we all came together and worked so hard and pulled out the win. That was a great moment and the first time I really realized what Flywheel was all about!



Radhika "Rad" Bhargav

- 1) Mountain View, California (home of Google!).
- 2) 1st year Master's student in Mechanical Engineering
- 3) This is the first time I've experienced life in the snow and I'm loving how when it snows (even in a storm) you can be outside and not really get wet.
- 4) I love that at the end of each Crossfit session the whole team is extremely chatty and giggly because we have just finished, what seemed like in the beginning, an impossibly difficult workout.

Pay-to-Win

If you don't think those ridiculously good looking rookies make a convincing enough case to help us out, "Pay-to-Win" might be your preferred way of making a donation. We're more than happy to earn out keep. To be involved in this program...

1) Pick a tournament Flywheel is attending this season:

Pres Day (Feb. 19-21)
 Eastern's (March 12-13)
 Centex (March 26-27)
 Sectionals, Regionals or Nationals (knock on wood) (TBD)

2) Pick a dollar amount (of your choice) to donate per win that we secure.

3) You don't donate unless we win!

For your donation, you'll get a write-up from the tournament, and if your donation is greater than \$50, we'll hook you up with a Flywheel disc as well (I guess that depends on our record— but we'll try our best...we promise).

If you're interested in participating, please e-mail flyfunds2011@umich.edu prior to one of the above listed tournaments. Thank you!

Come hang out with Flywheel: Events to look forward to this Spring!

March

- Flywheel Restaurant Night at Mia Za's
 - Flywheel Bar Night Fundraiser

April

- Flywheel Alumni Weekend

*Dates TBD. Stay posted for event specific e-mails!



[Donating Online](#)

For more regarding making a donation, please visit our website:
www.flywheelultimate.com/donations

To donate directly, please visit:

www.giving.umich.edu/give/flywheel

***All donations are tax deductible.**

Any gift will be greatly appreciated! Donations of \$50+ will score you a Flywheel disc (design shown right).

Thank you!



[Sponsoring Michigan Flywheel](#)

If you or your business has an interest in sponsoring Flywheel, we would be more than happy to show you off on our website, on our gear, and at tournaments and other events that we host. For more information and a complete sponsorship packet, please contact Kelsey DeLave at **kdelave@gmail.com**.

Business Donation Levels

- **Ultimate:** \$2000 - logo on both our jerseys and shorts, link on our home page, advertisement in our newsletter, Flywheel disc
- **Flywheel:** \$1000 - logo on jerseys, link on our home page, advertisement in our newsletter, Flywheel disc
- **Wolverine:** \$400-999 - link on our homepage and in our newsletter, Flywheel disc
- **Maize:** \$100-399 - link on our homepage, Flywheel disc
- **Blue:** \$1-99 - link on our donation page

[Ideas Anyone?](#)

This is our first season as the fundraising committee. At this stage, we recognize that a great fundraising idea is just as valuable as a donation. If you're much better at this than we are and have had success in the past with a specific fundraising event, let us know! We are open to any suggestions!



Please e-mail: flyfunds2011@umich.edu

2011 Flywheel Gear

*Note: All jerseys listed below are men's Patagonia jerseys.

Black Flywheel Jersey

(Logo #1)

- Long Sleeve: **\$40**
- Short Sleeve: **\$35**

White Flywheel Jersey

(Logo #2)

- Long Sleeve: **\$40**
 - Short Sleeve: **\$35**
- (awesome design by Paula Seville)

Flywheel Reversible Pinny

(white&blue/blue&yellow)

\$20

Flywheel Shot Glass

(Logo #1)

\$3

Flywheel Pint Glass

(Logo #2)

\$5

American Apparel Zip-Up

(Heather Gray sweatshirt, Logo #1)

\$32

American Apparel Crew Neck T-shirt

(Navy t-shirt, Logo #2)

\$15

Logo #1



Logo #2



Reversible



Hoodie



If you are interested in any of the above items, please click [here](#) to access the online order form. **Orders are due no later than February 28th, 2011.** Please include shipping/contact information if you are currently living outside of Ann Arbor.

E-mail Vicki Chang at vculti@umich.edu with any questions you may have regarding gear orders. Thank you!